

CommVault® Simpana®

Microsoft Windows-Centric, Unified Data Management® Solution for Microsoft Office SharePoint Server 2007, Windows SharePoint Services 3.0 and the environment SharePoint Resides In

Solution Overview

CommVault's solutions ensure high-performance data management, active-archiving, indexing for E-Discovery, compliance and migration for all Microsoft® SharePoint® Products and Technologies users. CommVault enhances the management of SharePoint Products and Technologies, Microsoft FAST indexing and the Microsoft Windows Server™ environments that SharePoint resides in. CommVault strategically integrates and offers consistent management for all SharePoint environments, including remote locations where SharePoint may reside. CommVault's Common Technology Engine can assist and accelerate your new install or upgrade to SharePoint Server 2007 and Windows® SharePoint Services 3.0. While managing the Windows Server environment SharePoint 2007 versions reside in, CommVault adds granular management (backup, archiving and restore) of various SharePoint items such as sites, documents, lists, surveys, .aspx pages, templates, contacts, etc. The granular management allows you to manage one, some, or all versions of various SharePoint items.

CommVault is optimized to take advantage of the 64-bit computing environment and Volume Shadow Copy Services (VSS) while integrating with SharePoint 2007 versions. Simpana can also continuously replicate SharePoint via Continuous Data Replication (CDR).

CommVault's archiving and compliance capabilities enable SharePoint data to be used within regulatory compliance guidelines. Data can be searched and recalled based on content, regardless of whether or not it is directly embedded in SharePoint, Microsoft Exchange Server or within the Windows environment.

Upgrading and remaining within compliance is easier with CommVault, as CommVault can restore older Windows SharePoint Services 2003 and SharePoint Portal Server data to Office SharePoint Server 2007 or Windows SharePoint Services 3.0, and Exchange Server.

CommVault's application-integrated Single Instance Storage (SIS) mechanism insures less storage space is used for backup and archiving. The SIS of data includes support for identical data that

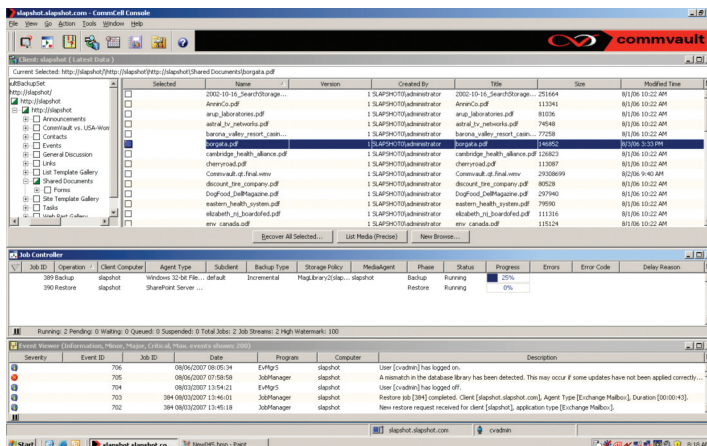


"Before CommVault, to restore a SharePoint document the entire SharePoint database needed to be restored thus overwriting any recently changed documents. After CommVault, we can now restore to the document level which generally takes less than a minute."

Richard Rudzinski,
IT Director, Technical Services
The Borgata Casino, Hotel and Spa

Top Five Reasons Why Customers Choose Microsoft and CommVault for Microsoft SharePoint Products and Technologies

1. Single, Unified, Windows-Centric solution enables backup, recovery, Active-Archiving, electronic data discovery, Single Instance Storage and compliance solution
2. Assist and accelerate upgrades to SharePoint 2007 by restoring granular items from previous versions of SharePoint Portal Server 2003 and Windows SharePoint Services 2003
3. 64-bit optimization enables superior performance of data movement, in particular for large SharePoint, Exchange, Microsoft SQL Server™, Microsoft Office Communications Server (OCS) and Windows Server environments
4. Consistent content-search of SharePoint, Exchange, SQL Server, OCS and heterogeneous data using Microsoft FAST indexing for a federated search across the enterprise
5. Manage all of your data from any location, anywhere in the world with Internet connectivity



One Unified Solution for enterprise data management.



2006 TECHNOLOGY INNOVATION PARTNER OF THE YEAR ISV/Software Solutions Finalist

may be duplicated in Exchange, SharePoint or Windows.

Business Pain Points Addressed

- **Simplifies data management**, protection and archiving through a centralized browser interface and Microsoft Office Outlook®
- **Integrated Archiving**, by document size, age and version management enabling administrators to only keep recent versions of items stored while allowing users to recall any and all versions of a document
- **Web Part Integration**, for seamless recalls of documents from secondary and tertiary storage
- **Granular Management** of many SharePoint items including documents, sites, surveys, .aspx pages, templates, contacts, etc.
- **Regulatory Compliance** assistance with the ability to backup all versions of items
- **Cross Server Restore capability** enables the movement of small and large data from one SharePoint environment to another
- **VSS integration for SharePoint data with "Generic Requestor" capability** enabling a single operation for hardware/provider based snapshots regardless of vendor
- **Microsoft FAST indexing**, enabling enterprise wide, application integrated searches
- **Synthetic Full Backup offers the ability** to significantly reduce the number of full backups and media used for storage
- **Simple Search** of data across the enterprise
- **Automatic Resume Ability** enables interrupted backups and restores to continue where they left off
- **Policy Based "Active-Archiving"** enables users to easily remain within file system quotas while still allowing access to older, less-used data
- **Data Management for the Windows Server System** foundation that Exchange resides in
- **Single Interface Manages Exchange, Active Directory and SharePoint data**, especially key when SharePoint is utilized as a public folder repository
- **Object and Attribute Management of Active Directory** is important as occasionally third party SharePoint applications mistakenly update Active Directory data
- **Easy Tiered Storage Management** as secondary, tertiary and more copies can be created within your enterprise for simple "Disk to Disk to <other>" media management

Technical Pain Points Addressed

- **Backup, Recovery, Migration, Archiving** and Fast Recovery of granular items, folders, sites or an entire SharePoint Server with the Windows Server System™ environment
- **Quick Recovery™ software** enables multiple point-in-time snapshots (VSS) and the ability to recover a SharePoint database in minutes
- **The Active Directory** plug-in enables management of objects and attributes, including the ability to recreate an object with Security Identifying Information (SID) for Windows Server 2003 environments
- **Continuous Data Replication** for SharePoint and the environment SharePoint resides in
- **Worldwide Management** via a browser based interface
- **Multi-Lingual Support**
- **Simple Off-Site data management** with the ability to mix and match media types (Disk, SAN, NAS, Tape, Magneto-Optical, DVD, etc.)
- **Reporting is simple** and can even include custom data management reports that can be sent to mobile phones
- **Attachment Type Configuration for Backup** so that certain file types are not backed up
- **Unified Messaging** integrated with a Unified Data Management Strategy
- **Underlying these applications is a set of common services:**
 - **Accelerate your upgrade to 2007** SharePoint Products and Technologies knowing that data can be retrieved from SharePoint 2003. CommVault's 64-bit optimization ensures high performance and that you take full advantage of the 64-bit server technology and 64-bit Windows Server software.
 - **Remain within storage quota limits** by using CommVault's Migration/Archiving for older, less-used data
- **CommVault Professional Services:** Broad worldwide coverage and support available for rapid

© 2008 Microsoft Corporation. All rights reserved.

This document is for information purposes only. MICROSOFT MAKES NO WARRANTIES, EXPRESS OR IMPLIED, IN THIS SUMMARY. Microsoft, the Microsoft logo, SQL Server, Active Directory, Office, Outlook, Exchange, SharePoint and Windows are either registered trademarks or trademarks of Microsoft Corporation in the United States and/or other countries. All other trademarks are property of their respective owners.

About CommVault Simpna

The CommVault® Simpna Windows-Centric solution includes strategic granular support for Microsoft Exchange, Microsoft SQL Server, Microsoft SharePoint Products and Technologies, Microsoft Active Directory, Microsoft Office Communication Server, etc.

CommVault is a Gold Certified partner that was recognized as a 2006 Microsoft Innovation Technology Partner of the Year Finalist.

Contact Info

CommVault

2 Crescent Place
Oceanport, NJ 07757, USA
www.commvault.com/microsoft
E-Mail: microsoft@CommVault.com
Primary Sales Contact: 732-870-4000

Primary business & technical contact:

Randy De Meno
Director, Advanced Applications
and Microsoft Partnership
Phone: 732-870-4038
E-Mail: RDeMeno@CommVault.com

Microsoft Corporation

One Microsoft Way
Redmond, WA 98052, USA

Primary Business Contact

Nagi Babu Punyamurthula
Business Development Manager
Phone: 425-703-4403
E-Mail: nagibabu@microsoft.com