



CommVault® Simpana®

For Microsoft® SharePoint® Products and Technologies

Windows® Centric, Unified Data Management for Microsoft SharePoint with Enterprise Business Search

Solution Overview

CommVault's Unified Data Management Solution® ensures high-performance data management, active archiving, content indexing for discovery in compliance, legal and regulatory environments. CommVault software enhances the management of Microsoft SharePoint including **utilizing the Microsoft® FAST indexing engine** while leveraging the 64-bit optimized Windows Server® environment in which SharePoint resides.

CommVault's **"Release Independence"** can assist and accelerate your new install or upgrade to Microsoft® Office SharePoint® Server 2007, Windows® SharePoint® Services 3.0 and the next release of the Microsoft® Office system. CommVault software adds **granular management** (backup, archiving and restore) of various SharePoint items such as sites, documents, lists, ASPX pages, templates, contacts, etc. The granular management allows you to manage all versions of various SharePoint items.

The CommVault **archiving capability enables a faster, trimmer, better performing SharePoint server** by archiving items based on policy (size, age, version count) out of the SharePoint server while still enabling users to easily recall archived data through the use of Web Parts. Administrators can run native Microsoft® SQL Server® utilities to **reclaim disk space and database "white space"**.

The CommVault® Simpana® suite is **optimized to take advantage of the 64-bit computing environment** and Volume Shadow Copy Services (VSS) and can also continuously replicate SharePoint via Continuous Data Replication (CDR).

CommVault software's archiving and compliance capabilities enable SharePoint data to be used within regulatory compliance guidelines. **Data can be searched and recalled based on content**, regardless of whether or not it is directly embedded in SharePoint, Exchange or within the Windows environment.

CommVault software is **tightly integrated with SharePoint Records Center**, enabling CommVault Simpana software to be the foundation for records management across the enterprise. Policies can be set across the heterogeneous enterprise (including Exchange and File System) for data automatically input into Records Center.

CommVault software's foundation includes **DeDuplication / Single Instance Storage (SIS)** to help decrease storage space used for backup and archiving.

Business Pain Points Addressed

- **Single data management solution**, offers backup/recovery, archiving, replication, deduplication and content search through a centralized browser interface and Microsoft® Office Outlook®.
- **Integrated archiving** by document size, age and version management enabling administrators to keep only recent versions of items stored while allowing users to recall any and all versions of a document.
- **Granular management** of many SharePoint items including documents, sites, surveys, .ASPX pages, templates, contacts, etc.
- Regulatory compliance assistance with the ability to backup all versions of items.
- **Microsoft FAST indexing** enables enterprise-wide, application integrated searches.
- Integrated **Records Management** delivers a heterogeneous solution utilizing SharePoint Records Center across the enterprise.
- **Automatic Resume-Ability** enables interrupted backups, archives and restores to continue where they left off.
- **Policy-based "Active-Archiving"** enables users to easily remain within file system quotas while still allowing access to older, less-used data.
- Data management for the Windows Server System™ foundation in which SharePoint resides.
- **Single interface** manages Exchange, Microsoft® Active Directory®, Windows, OCS and SharePoint data.
- **Easy tiered storage management** as secondary, tertiary and more copies can be created within your enterprise for simple "Disk to Disk to <other>" media management.

"Before CommVault, to restore a SharePoint document the entire SharePoint database needed to be restored thus overwriting any recently changed documents. After CommVault, we can now restore to the document level which generally takes less than a minute."

**Richard Rudzinski, I/T Director
Technical Services
The Borgata Casino, Hotel and Spa**

Top Reasons Why Customers Choose Microsoft and CommVault for Microsoft SharePoint Products and Technologies

1. Single, unified, Windows centric solution enables backup, recovery, active-archiving, records management and Electronic Business Search (E-Discovery) at the content level.
2. "Release Independence" assists and accelerates upgrades to SharePoint Server 2007 and Office by restoring granular items from previous versions of SharePoint.
3. Enables high performance of data movement via 64-bit optimization, particularly for large SharePoint, Exchange, SQL Server and Microsoft® Office Communications Server (OCS) environments.
4. Integrated with SharePoint Records Center allowing policies to be set to send various data types based on content or classification into Records Center.
5. Manage all of your data from virtually any location, anywhere in the world with Internet connectivity.

CommVault Simpiana

For SharePoint® Products and Technologies

Contact Info



CommVault

2 Crescent Place
Oceanport, NJ 07757, USA
www.commvault.com/microsoft
E-Mail: microsoft@CommVault.com

Primary Business & Technical Contact

Randy De Meno
Chief Technologist – Windows Technologies
& Microsoft Partnership
Phone: +1 732-870-4038
E-Mail: RDeMeno@CommVault.com

Headquarters Contact

Phone: +1 732-870-4000



Microsoft Corporation

One Microsoft Way
Redmond, WA 98052, USA

US Field Partnering Manager

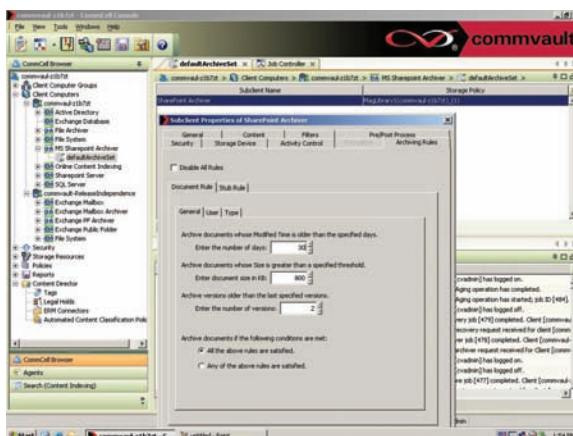
Teri Doyle
Business Development Manager
Phone: +1 425-421-7646
E-Mail: Teri.Doyle@microsoft.com

Primary Business Contact

Dan Arildson
Senior Business Development Manager
Phone: +1 425-705-5290
E-Mail: darilds@microsoft.com

Executive Contact

Nagi Babu Punyamurthula
Director
Phone: +1 425-703-4403
E-Mail: nagibabu@microsoft.com



One unified solution for enterprise data management

Technical Pain Points Addressed

Backup, recovery, migration, archiving, data mining, content search and quick recovery of granular items, folders, sites, subsites or an entire SharePoint server with the Windows Server System environment.

- **DeDuplication / SIS** at the Block level is application aware, reducing overall storage of backup and archive data.
- **“SnapBackup”** enables multiple point-in-time snapshots (VSS) and the ability to recover a SharePoint database in minutes.
- **Active Directory & ADAM** plug-in enables management of objects and attributes, including the ability to recreate an object with Security Identifying Information (SID) for Windows Server.
- **Continuous Data Replication (CDR)** for SharePoint and the environment in which SharePoint resides.
- **Worldwide management** via a browser-based interface.
- **Multiple language support.**
- **Simple off-site data management** with the ability to mix and match media types (Disk, SAN, NAS, Tape, Magneto-Optical, DVD, etc). Simple set up of D2D2T.
- **Simplified reporting** can include custom data management reports sent to mobile devices.
- **Cross-server & cross-platform restore capability** enables the movement of small and large data from one environment to another.
- **VSS integration** for Exchange, SharePoint, Windows, and SQL Server data with **“Generic Requestor”** capability enables a single operation for hardware/provider based snapshots regardless of vendor.
- **Synthetic full backup** offers the ability to significantly reduce the number of full backups and media used for storage.
- **Accelerate your upgrade** to SharePoint Server or 2007 SharePoint Products and Technologies knowing data can be retrieved from previous versions of SharePoint.
- CommVault software’s **64-bit optimization** ensures high performance allowing you to take full advantage of the 64-bit server technology and 64-bit Windows Server software.
- **Remain within storage quota limits** with archiving to less expensive storage.
- **Web part integration**, allows for seamless recalls of documents from secondary and tertiary storage.
- **CommVault professional services:** Broad worldwide coverage and support available for rapid installation that can be tailored to your environment.

About CommVault

The CommVault® Simpiana® Windows Centric Data Management solution enables you to use 1 SINGLE, UNIFIED Data Management solution which will optimally perform the tasks of many other disparate solutions. Simpiana Windows Centric solutions are the result of extensive collaboration between Microsoft and CommVault.

Use Windows to easily manage SharePoint, Exchange, Office Communications Server, SQL Server, Windows and heterogeneous environments such as UNIX, Linux, NDMF, NetWare, GroupWise, Oracle, Sybase, DB2, Notes/Domino, Informix and MAC data.

CommVault is a Gold Certified partner recognized as a 2006 Microsoft Innovation Technology Partner of the Year Finalist.