



CommVault®



commvault
solving forward™

For DeDuplication / Single Instance Storage (SIS)

"We're expanding the role of Windows Servers by enabling them to be "THE" DeDuplication target for an enterprise."

Al Bunte
Chief Operating Officer
CommVault

Top Reasons Why Customers Choose Microsoft and CommVault for Microsoft Technologies

1. Single, unified, Windows centric solution enables content search across the enterprise including for heterogeneous data.
2. "Release Independence" enables seamless search across various file system versions and applications.
3. 64-bit optimization enables high performance of data movement, particularly for large SharePoint, Exchange, Microsoft® SQL Server® and Microsoft® Office Communications Server (OCS) environments.
4. Integrated with SharePoint Records Center. Policies can be set to send various data types based on content or classification into Records Center.
5. Management of all your data from virtually any location, anywhere in the world with Internet connectivity.

Windows Server® Can Now Offer DeDuplication / SIS for the Heterogeneous Enterprise Reducing Storage Use and Cost

Solution Overview

CommVault's optimized 64-bit Simpana® software showcases the Windows® platform enabling **Windows Server to be the DeDup / SIS device** for your heterogeneous enterprise. Any hardware running Windows Server can now dramatically reduce the amount of data stored for backup, archive and "SnapBackup" enabling reduced storage utilization and cost.

CommVault software's **rich application awareness** outperforms traditional "DeDup" devices by not only performing "block" level DeDup, but also adding application awareness to even further reduce storage use. Instead of simply managing "a Microsoft® Exchange database" or a "Microsoft® SharePoint® database" and all the duplicate data contained within (especially at the attachment/file level), CommVault software's ability to recognize duplicates within the application provides a more intelligent hardware/software combination for DeDup / SIS.

CommVault's **"Release Independence"** is seamlessly integrated with DeDup / SIS option enabling reduced instances of data being stored, even across various versions of applications and operating systems.

As a part of the Simpana® suite, CommVault's DeDup / SIS is also integrated with **CommVault's FAST based E-Discovery search** capabilities. CommVault software can quickly search DeDup / SIS data, recalling the data while delivering the multiple locations the individual files/attachments resided. This means DeDup is integrated with search and **SharePoint Records Center** for long term Records Management. Data can be seamlessly managed based on policies sent to Records Center for long term and legal discovery actions. The search results can be sent to various output types, including Microsoft® Office format. Automatically "Vault" data by storing it exactly as it originally was, including metadata.

With **growing historical data** across your enterprise, and expanding requirements put on the retention of your heterogeneous data, your enterprise can utilize a powerful 64-bit Windows Server as a DeDup / SIS for Exchange, SharePoint, Windows, UNIX, Linux, NetWare, Notes/Domino and MAC data.

Business Pain Points Addressed

- **Single data management solution** offering backup/recovery, archiving, replication, deduplication and content search through a centralized browser interface and Microsoft® Office Outlook®.
- **Integrated archiving**, by document size, age and version management enabling administrators to only keep recent versions of items stored while allowing users to recall any and all versions of a document.
- **Reduce storage requirements** by eliminating storage of duplicate data.
- **Designed to meet regulatory compliance** requirements through control of content.
- Effectively manage and repurpose content to gain increased business value.
- **Simplify organization-wide access** to both structured and unstructured information across disparate systems.
- **Accelerate shared business processes** across organizational boundaries.
- **Share business data** without divulging sensitive information.
- **Provide a single, unified platform** to manage intranet, extranet, and Internet applications across the enterprise.
- **Automatic Resume-Ability** enables interrupted backups, archives and restores to continue where they left off.
- **Policy-based "Active-Archiving"** enables users to easily remain within file system quotas while still allowing access to older, less-used data.
- Data management for the Windows Server System™ foundation in which SharePoint and Records Center reside.
- **Single interface** manages Exchange, Microsoft® Active Directory®, Windows, OCS and SharePoint data.
- **Easy tiered storage management** as secondary, tertiary and more copies can be created within your enterprise for simple "Disk to Disk to <other>" media management.

CommVault Simpana

DeDuplication / Single Instance Storage (SIS)

Contact Info



CommVault

2 Crescent Place
Oceanport, NJ 07757, USA
www.commvault.com/microsoft
E-Mail: microsoft@CommVault.com

Primary Business & Technical Contact

Randy De Meno
Chief Technologist – Windows Technologies
& Microsoft Partnership
Phone: +1 732-870-4038
E-Mail: RDeMeno@CommVault.com

Headquarters Contact

Phone: +1 732-870-4000



Microsoft Corporation

One Microsoft Way
Redmond, WA 98052, USA

US Field Partnering Manager

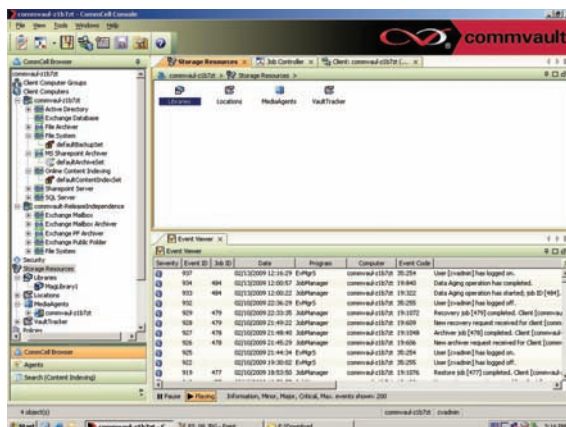
Teri Doyle
Business Development Manager
Phone: +1 425-421-7646
E-Mail: Teri.Doyle@microsoft.com

Primary Business Contact

Dan Arildson
Senior Business Development Manager
Phone: +1 425-705-5290
E-Mail: darilds@microsoft.com

Executive Contact

Nagi Babu Punyamurthula
Director
Phone: +1 425-703-4403
E-Mail: nagibabu@microsoft.com



One Unified Solution for
enterprise data management

Technical Pain Points Addressed

- **Records management** integrated with backup, recovery, migration, archiving, DeDup / SIS and fast recovery of enterprise data leveraging the Windows Server System environment.
- **Quick Recovery® feature** enables multiple point-in-time snapshots (VSS) and the ability to recover a SharePoint database in minutes.
- **Active Directory & ADAM agent** enables management of objects and attributes, including the ability to recreate an object with Security Identifying Information (SID) for Windows Server.
- **Continuous Data Replication (CDR)** for Exchange, SharePoint, SQL Server and the environment in which they reside.
- **Worldwide management** via a browser-based interface.
- **Multiple language support.**
- **Simple off-site data management** with the ability to mix and match media types (Disk, SAN, NAS, Tape, Magneto-Optical, DVD, etc).
- **Simplified reporting** can include custom data management reports sent to mobile devices.
- **Unified messaging** integrated with a unified data management strategy.
- **Cross-server & cross-platform management restore capability** enables the movement of small and large data from one application and environment to another.
- **VSS integration** with "Generic Requestor" capability enabling a single operation for hardware/provider based snapshots regardless of vendor.
- **Synthetic full backup** offers the ability to significantly reduce the number of full backups and media used for storage.
- **Accelerate your upgrade** to Exchange, Microsoft Office SharePoint Server or Windows knowing data can be retrieved from previous versions.
- CommVault software's **64-bit optimization** ensures high performance allowing you to take full advantage of the 64-bit server technology and 64-bit Windows Server software.
- Remain within storage quota limits by using CommVault's **Active Archiving** for older, less-used data.
- **SharePoint Web part integration**, for seamless recalls of documents from secondary and tertiary storage.
- System State Object and attribute management of **Active Directory & ADAM.**
- **CommVault professional services:** Broad worldwide coverage and support available for rapid installation that can be tailored to your environment.

About CommVault

The CommVault® Simpana® Windows Centric Data Management solution presents a heterogeneous, logical application-integrated view of the enterprise rather than a physical view of enterprise storage. One Single CommVault solution provides the functionality of a plethora of other non-integrated software options.

CommVault's cradle-to-grave application awareness enables management of data from inception to when it should no longer be managed.

CommVault is a Gold Certified partner recognized as a 2006 Microsoft Innovation Technology Partner of the Year Finalist.

© 2009 Microsoft Corporation. All rights reserved. This document is for information purposes only. MICROSOFT MAKES NO WARRANTIES, EXPRESS OR IMPLIED, IN THIS SUMMARY. Microsoft, the Microsoft logo, Active Directory, Outlook, SharePoint, SQL Server, Windows, Windows Server, and Windows Server System are the registered trademarks of the Microsoft group of companies. CommVault, the CommVault logo, Simpana, and Quick Recovery are trademarks or registered trademarks of CommVault Systems, Inc. All other trademarks are property of their respective owners. Part No. 098-111145