



# CommVault® Simpana® for

## Windows Server® 2008, Windows® XP and Windows Vista®

Windows Centric, Unified Data Management with Archiving, Compliance, Replication, Content Search & Optimized "LapTop" Backup / Recovery

*"We see 64-bit computing as a key part of our strategy. Having the CommVault solution for 64-bit data management and backup already in place makes that strategy much easier to implement."*

**Norm King**  
Systems Engineer  
Raymond James Financial

### Top Five Reasons Why Customers Choose Microsoft and CommVault Solutions

1. Single, Windows Server 2008 and 64-bit optimized unified Windows centric solution enables backup, recovery, archiving, content management, and compliance solutions.
2. Powerful, granular data management for Microsoft Exchange Server, Microsoft SharePoint Products and Technologies, Microsoft® SQL Server®, Microsoft® Active Directory®, Microsoft® Office Communications Server (OCS), Microsoft® Virtual Server, and Windows.
3. "Release Independence" assists and accelerates Microsoft upgrades to the latest operating system and application versions.
4. Enables the Microsoft® FAST indexing engine to be used for quick, reliable enterprise-wide search of on-line, near-line and off-line data.
5. Single Instance Storage (SIS) of various data types enabling de-duplication at the application and operating system level, reducing the total amount of storage used.

### Solution Overview

CommVault® Simpana® Software Suite is a unique data management solution predicated upon Windows Server 2008. **CommVault's Unified Data Management®** solution ensures high-performance **64-bit optimized** data management for the Windows infrastructure. CommVault software enables consistent management of Windows 2000, Windows Server 2003, Windows XP, Windows Server 2008 and Windows Vista. With CommVault solutions you also get active archiving, backup/recovery and content indexing to enhance your Windows experience.

CommVault's **"Release Independence"** can assist and accelerate your new install or upgrade to Windows Server 2008 and Windows Vista. CommVault Simpana software adds **specialized "LapTop" and workstation management** by offering integrated "full + byte" level backup.

**The CommVault archiving capabilities help enable a faster, trimmer, better performing Windows device** by archiving items based on policy (size, age, type) from Windows servers but still enables users to easily recall archived data via Windows Internet Explorer®. Users and administrators can run native utilities to reclaim disk space.

The CommVault Simpana suite is optimized to take advantage of the **64-bit computing environment**, and Volume Shadow Copy Services (**VSS**) is a simple "check box" away from configuration. CommVault software's archiving and compliance capabilities enable Windows computers to be used within regulatory compliance guidelines. **Data can be searched and recalled** based on content, regardless of whether or not it currently resides on its initial environment. CommVault software is tightly integrated with **SharePoint Records Center**, enabling CommVault software to be the foundation for records management across the enterprise. Policies can be set across the heterogeneous enterprise (including Exchange, Windows and heterogeneous File Systems) for data automatically input into Records Center.

CommVault software's foundation includes **DeDuplication / Single Instance Storage (SIS)** ensuring less storage space is used for backup and archiving.

### Business Pain Points Addressed

- **Single data management solution** offering backup/recovery, archiving, replication, deduplication and content search through a centralized browser interface and Microsoft® Office Outlook®.
- **"Release Independence"** by migrating intact from previous versions of Windows, back to Windows 2000 and restore to future versions of Windows such as Windows Vista and Windows Server 2008.
- **Integrated archiving** by document size, age and version management enables administrators to keep only recent versions of items stored while allowing users to recall any and all versions of a document.
- Offers **granular application management**.
- Increases productivity of system administration through automated and centralized policy management.
- Offers **full optimized support** of 64-bit Windows Server technology.
- **Automatic Resume-Ability** enables interrupted backups, archives and restores to continue where they left off.
- Assists regulatory compliance requirements and enterprise search capability spanning multiple environments and applications.
- **DeDuplication / Single Instance Storage (SIS)** of various data types including block level and application integrated such as Microsoft® Exchange Server, Microsoft® Office SharePoint Server and SQL Server stored on Windows file servers.
- **Business Productivity Search / Content Search (FAST)** – One product, one index, one search across the enterprise.

# CommVault Simpana for

# Windows Server® 2008, Windows XP and Windows Vista®

## Contact Info



## CommVault

2 Crescent Place  
Oceanport, NJ 07757, USA  
www.commvault.com/microsoft  
E-Mail: microsoft@CommVault.com

## Primary Business & Technical Contact

Randy De Meno  
Chief Technologist – Windows Technologies  
& Microsoft Partnership  
Phone: +1 732-870-4038  
E-Mail: RDeMeno@CommVault.com

## Headquarters Contact

Phone: +1 732-870-4000

# Microsoft

## Microsoft Corporation

One Microsoft Way  
Redmond, WA 98052, USA

## US Field Partnering Manager

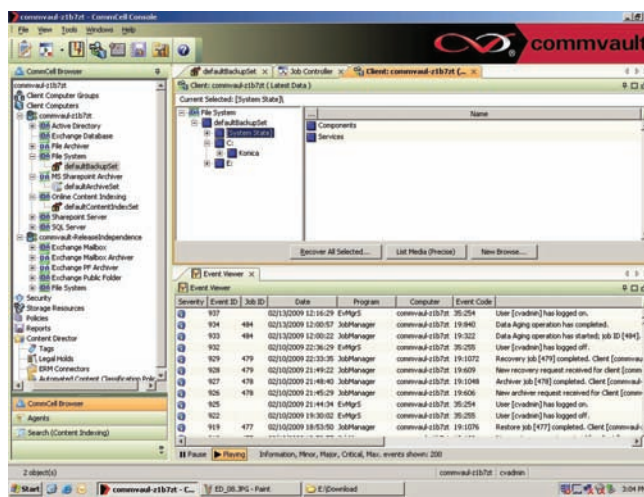
Teri Doyle  
Business Development Manager  
Phone: +1 425-421-7646  
E-Mail: Teri.Doyle@microsoft.com

## Primary Business Contact

Dan Arildson  
Senior Business Development Manager  
Phone: +1 425-705-5290  
E-Mail: darilds@microsoft.com

## Executive Contact

Nagi Babu Punyamurthula  
Director  
Phone: +1 425-703-4403  
E-Mail: nagibabu@microsoft.com



*One unified solution for enterprise data management*

## Technical Pain Points Addressed

- **Backup, recovery, migration, archiving, data mining, content search** and quick recovery of granular application items such as messages, folders, sites, sub-sites, or an entire Windows client or server.
- **DeDuplication / SIS** at the Block level is application aware, reducing overall storage of backup and archive data.
- **“SnapBackup”** enables multiple point-in-time snapshots (VSS) and the ability to recover a SharePoint database in minutes.
- **Active Directory & ADAM** agent enables management of objects and attributes, including the ability to recreate an object with Security Identifying Information (SID) for Windows Server.
- **Continuous data replication (CDR)** of Windows.
- **Worldwide management** via a browser-based interface.
- **Multiple language support.**
- **Simple off-site data management** with the ability to mix and match media types (Disk, SAN, NAS, Tape, Magneto-Optical, DVD, etc). Simple setup of D2D2T.
- **Simplified reporting** can include custom reports sent to mobile devices.
- **Cross-platform restore capability** enables the movement of small and large data from Windows, UNIX or Linux to Windows.
- **VSS integration** for Windows with **“Generic Requestor”** capability enabling a single operation for hardware/provider based snapshots regardless of vendor.
- **Synthetic full backup** offers the ability to significantly reduce the number of full backups and media used for storage.
- **Accelerate your upgrade** of Windows knowing data can be retrieved from previous versions of Windows dating back to Windows 2000.
- **64-bit optimization** ensures high performance allowing you take full advantage of the 64-bit technology.
- **Remain within storage quota limits** with archiving to less expensive storage.
- **CommVault professional services:** Broad worldwide coverage and support available for rapid installation that can be tailored to your environment.

## About CommVault

The CommVault® Simpana® Windows Centric Data Management solution enables you to use 1 SINGLE, UNIFIED Data Management solution which will optimally perform the tasks of many other disparate solutions. Simpana Windows Centric solutions are the result of extensive collaboration between Microsoft and CommVault.

Use Windows to easily manage SharePoint, Exchange, Office Communications Server, SQL Server, Windows and heterogeneous environments such as UNIX, Linux, NDMF, NetWare, GroupWise, Oracle, Sybase, DB2, Notes/Domino, Informix and MAC data.

CommVault is a Gold Certified partner recognized as a 2006 Microsoft Innovation Technology Partner of the Year Finalist.