

CommVault® Simpana® 9



"With CommVault, we're assured that if anything happens to our information, if there's any problem, we can quickly get the system back up and running."

Charles Orndoff
VP Infrastructure Services
CROSSMARK

Top Reasons Why Customers Choose CommVault® Software

1. Delivers a single Windows Centric solution enables Backup, Recovery, Active-Archiving, Records Management and Electronic Business Search (E-Discovery) at the content level.
2. "Release Independence" assists and accelerates upgrades to the latest versions of SharePoint by restoring and recalling granular items from previous versions of SharePoint.
3. 64-bit optimization enables superior performance of data movement, in particular for large SharePoint, Exchange, Microsoft SQL Server and Microsoft® Office Communications Server (Lync) environments.
4. Integrated with SharePoint's Records Center. Policies can be set to send various data types based on content or classification into Records Manager.
5. Manage all of your data from any location, anywhere in the world with Internet connectivity.

Windows® Centric Singular Information Management® Approach for Heterogeneous Environments.

Solution Overview

CommVault's Singular Information Management® solution is 64-bit optimized and is a unique Data Management solution made up of modules designed and optimized on a **single Windows code base** to work together seamlessly, sharing a single set of enterprise-level services. **The Microsoft® FAST integrated Content Search, DeDuplication, Archive, Replication, Backup, Application Integrated Granular Recovery, Data Mining and Resource Management modules** provide singular efficiency, performance, reliability, and control over the enterprise — to help manage data growth, lower costs, reduce risks and assist/accelerate upgrades.

CommVault software uses an expandable range of application modules and shares a single set of back-end services (Common Technology Engine) to deliver **leading-edge functionality that truly unifies** and simplifies enterprise data management and maximizes cost effectiveness. This approach ensures granular, "Release Independent" application recovery to enhance the management of Microsoft® Exchange, Microsoft® SharePoint®, Microsoft® SQL Server™, Microsoft® Lync™, Active Directory® and ADAM while showcasing the benefits of Hyper-V™ and smartly leveraging cloud storage such as Azure™.

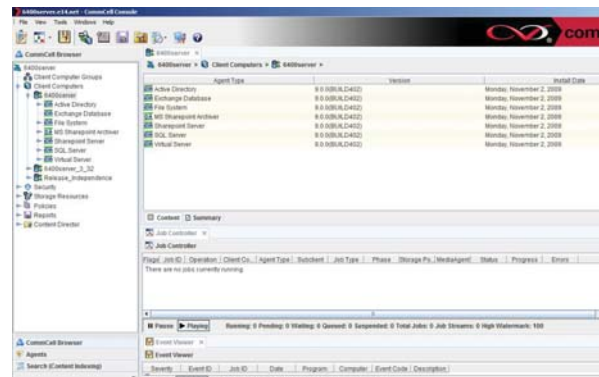
CommVault software's **"Release Independence"** can assist and accelerate your new install or upgrade to SharePoint, Exchange or the latest version of Windows. CommVault adds granular management (backup, archiving and restore) of various SharePoint items such as sites, documents, lists, .ASPX pages, templates, contacts, etc., and Exchange mailboxes, messages and Microsoft® Outlook® extended information. The granular management allows you to manage all versions of various Exchange, SharePoint or Active Directory items.

CommVault software's archiving enables a **faster, trimmer, better performing Exchange and SharePoint servers** by archiving items based on policy (size, age, version count) to less expensive secondary storage (including Azure) while enabling users to easily recall archived data. Administrators can run native Exchange, SharePoint or SQL utilities to reclaim disk space and database "white space".

CommVault software's **archiving** and compliance capabilities enable Exchange and SharePoint data to be used within regulatory compliance guidelines. Data can be searched and recalled based on content, regardless of whether or not it is directly embedded in SharePoint, Exchange or within the Windows environment.

CommVault Simpana® 9 is tightly integrated with **SharePoint Records Center**, enabling CommVault to be the foundation for Records management across the enterprise. Policies can be set across the heterogeneous enterprise (Exchange, Windows and heterogeneous File Systems too) for data automatically inputted into Records Manager.

CommVault software's foundation includes **Client Side DeDuplication/Single Instance Storage (SIS)** ensuring a Windows server can reduce storage space used for backup and archiving. The DeDuplication can be performed prior to sending data to a storage location reducing bandwidth making Cloud storage even more attractive. CommVault software also enables DeDuplication to tape without requiring re-hydration of stored data.



One unified solution for enterprise data management

CommVault Simpana 9

Contact Info



CommVault

2 Crescent Place
Oceanport, NJ 07757, USA
www.commvault.com/microsoft
E-Mail: microsoft@CommVault.com
or info@commvault.com

Primary business & technical contact:

Randy De Meno
Chief Technologist – Windows Products and
Microsoft Partnership
Phone: +1 732-870-4038
E-Mail: RDeMeno@CommVault.com

Headquarters contact

Phone: +1 732-870-4000



Microsoft Corporation

One Microsoft Way
Redmond, WA 98052, USA

US Field Partnering Manager

Teri Doyle
Business Development Manager
Phone: +1 425-421-7646
E-Mail: TeriD@microsoft.com

Primary Business Contact

Karl Dittman
Business Development Manager
Phone: +1 425-538-3468
E-Mail: KarlD@microsoft.com

CommVault's Embrace & Enhance Strategy enables:

- **Backup, Recovery, Migration, Archiving, Data Mining, Content-Search** with quick recovery of granular items including mailboxes, messages, folders, contacts, calendar items and more or an entire SharePoint environment with its Windows Server System™ environment.
- **DeDuplication/SIS** significantly reduces overall storage usage for backup and archive data including the ability to DeDup to Cloud (Azure) and tape.
- **Enterprise wide Content Search** with FAST for heterogeneous search and SharePoint Search integration.
- **Active Directory® & ADAM plug-in** enables management of objects and attributes, including the ability to recreate an object with Security Identifying Information (SID) for Windows Server environments.
- **Hyper-V™ supported** via CommVault virtualized server agents (1 agent to manage multiple VMs).
- **Continuous Data Replication** offered within the Simpana suite.
- **HTTP Server addressing** with opportunistic scheduling.
- **SnapProtect™ technology** enables multiple point-in-time snapshots with the ability to recover a server and the application quickly.
- **Web Desktop Console** for remote off-line browse.
- **Worldwide management** via a browser-based interface.
- **Multi-Lingual support**, including Outlook plug-in for active archiving so users can remain in their native language.
- **Simple off-site data management** with the ability to mix and match media types (Disk, Cloud, SAN, NAS, Tape, Magneto-Optical, DVD, etc.).
- **Reporting is simple** and can include custom reports that can be sent to mobile devices as well as Microsoft® System Center.
- **Cross Server Restore capability** enables the movement of small and large data from one SharePoint environment to another.
- **PST Files** can be reduced or eliminated with CommVault software while **PST data** can be added for content and archive tracking.
- **Accelerate your upgrade** to Exchange Server 2010 knowing data can be retrieved from Exchange 5.5, 2000 and Exchange Server 2003/2007 at the message, mailbox or Outlook extended information level.
- **CommVault software's 64-bit optimization** ensures high performance and full advantage of the 64-bit server technology and 64-bit Windows Server software.
- **Quota Management:** Users can more easily remain within their mailbox quota limits by using CommVault software's mailbox management, and leverage less expensive secondary storage (Windows Storage Server for example) for older, less utilized E-Mail.
- **CommVault Professional Services:** Broad worldwide coverage and support available for rapid installation that can be tailored to your environment.

About CommVault

The CommVault® Simpana Windows Centric Data Management solution enables you to use 1 SINGLE Data Management solution which will optimally perform the tasks of many other disparate solutions while leveraging storage devices such as disk and Azure. Simpana software is the result of extensive collaboration between Microsoft and CommVault.

Use Windows to easily manage SharePoint, Exchange, Lync, SQL, Active Directory, Windows and heterogeneous environments such as UNIX, Linux, NDMP, NetWare, GroupWise, Oracle, Sybase, DB2, Notes/Domino, Informix and MAC data.

CommVault is a Gold Certified partner that was recognized as a:

- 2006 Microsoft Innovation Technology Partner of the Year Finalist
- 2009 Advanced Infrastructure – Storage Solutions Partner of the Year Finalist
- 2010 Global ISV Infrastructure Partner of the Year Finalist



© 2010 Microsoft Corporation. All rights reserved.

This document is for information purposes only. MICROSOFT MAKES NO WARRANTIES, EXPRESS OR IMPLIED, IN THIS SUMMARY. Microsoft, the Microsoft logo, Active Directory, Azure, Hyper-V, Internet Explorer, Lync, Outlook, SharePoint, SQL Server, Windows, Windows Server, and Windows Server System are either registered trademarks or trademarks of Microsoft Corporation in the United States and/or other countries. All other trademarks are property of their respective owners.

CommVault, CommVault and logo, the "CV" logo, CommVault Systems, Solving Forward, Singular Information Management, Simpana, Unified Data Management, Vault Tracker, and SnapProtect are trademarks or registered trademarks of CommVault Systems, Inc.