



CommVault® Simpana® 9 for Exchange

"I have used CommVault for years here in Microsoft IT for Exchange and have done thousands of backups and restores and never once have I had an issue restoring data."

Georgia Huggins,
Operations Analyst
Microsoft IT

Top Reasons Why Customers Choose CommVault® Software for Exchange Server 2010

1. Delivers a single Windows Centric solution enabling active archiving, content search, classification, migration, backup, recovery, content management, DeDuplication and compliance for Exchange Server 2010 and Microsoft® Office.
2. Assists and accelerates upgrades to Exchange Server 2010 by restoring granular items from previous versions of Exchange dating back to Exchange 5.5.
3. Enables superior performance of data movement, particularly for large Exchange environments via 64-bit optimization.
4. Manages all Exchange data by "content" including automatic integration with Microsoft FAST indexing and Microsoft SharePoint Records Center.
5. Manages all data from any location, anywhere in the world with Internet connectivity.

Windows® Centric Singular Information Management for Microsoft® Exchange Server 2010 and the Microsoft Enterprise

Solution Overview

CommVault's Singular Information Management® solution ensures a single piece of software enables high-performance data management, active-archiving, backup/recovery, DeDuplication and content indexing for Enterprise Business Search (**E-Discovery**) in compliance, legal and regulatory environments. CommVault software enhances Microsoft Exchange and the growing amount of data Exchange is managing. Simpana software utilizes the Microsoft® FAST indexing engine to recall data based on content while leveraging the **64-bit optimized Windows Server®** environment where Exchange resides.

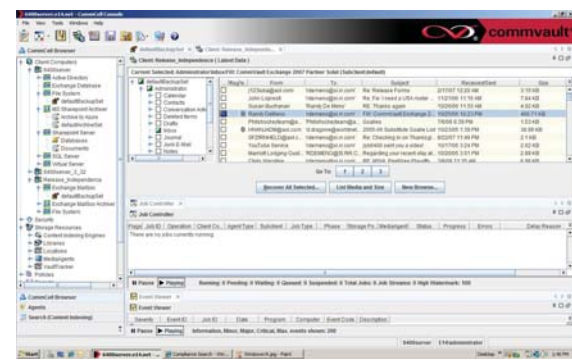
CommVault for Exchange enhances:

- **Enterprise-wide Content Search** (using Microsoft FAST indexing) of on-line, near-line and off-line data
- **"Release Independent"** Archive, Migration, Recovery and Replication
- **DAG integrated** for "follow the passive" node management
- **Archive** by document size, age and version management **enabling faster, trimmer, better performing Exchange databases** while users can enable search-based recall
- **OnePass** backup and archive process
- Seamless integration for **on-premise and hosted versions of Exchange**
- **Backup with Disaster Recovery** and Application Integrated **Granular Recovery**
- CommVault **SnapProtect™** feature integrated and VSS integrated
- Seamless **Azure™** and other cloud storage integration
- **DeDuplication**/Single Instance Storage (SIS, block and application integrated)
- **Client side DeDuplication** (DeDup prior to moving data)
- **Simultaneous Search** across Exchange, Microsoft® SharePoint®, Microsoft® Lync™ and Windows
- **"Resume-Ability"** enabling interrupted backups and restores to continue at point of interruption
- CommVault **archiving** integrated with Exchange-internal archiving
- **HTTP Server addressing** with opportunistic scheduling
- **Web Desktop Console** for off-line browse
- Auto-Feed data to **SharePoint Records Center**

Via one browser-based interface, Simpana® software enhances Exchange with user and administrator ability to **microscopically manage data** while curtailing data growth and lowering storage costs.

CommVault's **"Release Independence"** can assist and accelerate your new install or upgrade to Exchange Server 2010. CommVault software adds granular management of various Exchange and Microsoft® Outlook®/Office extended items such as messages, contacts, calendar items, notes and tasks. The granular management allows you to manage Exchange data from previous versions while searching and restoring based on content.

CommVault software's archiving enables a **faster, trimmer, better performing Exchange server** by archiving items based on policy (size, age, file type) out of the Exchange server while enabling users to easily recall archived data through Outlook.



One unified solution for enterprise data management

CommVault Simpana 9 for Exchange

Contact Info



CommVault

2 Crescent Place
Oceanport, NJ 07757, USA
www.commvault.com/microsoft
E-Mail: microsoft@CommVault.com
or info@commvault.com

Primary business & technical contact:

Randy De Meno
Chief Technologist – Windows Products and
Microsoft Partnership
Phone: +1 732-870-4038
E-Mail: RDeMeno@CommVault.com

Headquarters contact

Phone: +1 732-870-4000



Microsoft Corporation

One Microsoft Way
Redmond, WA 98052, USA

US Field Partnering Manager

Teri Doyle
Business Development Manager
Phone: +1 425-421-7646
E-Mail: TeriD@microsoft.com

Primary Business Contact

Karl Dittman
Business Development Manager
Phone: +1 425-538-3468
E-Mail: KarlD@microsoft.com

CommVault's Embrace & Enhance of Exchange enables:

- **Backup, Recovery, Migration, Archiving, Data Mining, Content-Search** with quick recovery of granular items including mailboxes, messages, folders, contacts, calendar items and more or an entire SharePoint environment with its Windows Server System™ environment.
- **DeDuplication/SIS** significantly reduces overall storage usage for backup and archive data including the ability to DeDup to Cloud (Azure) and tape.
- **Enterprise wide Content Search** with FAST for heterogeneous search.
- **Active Directory® & ADAM plug-in** enables management of objects and attributes, including the ability to recreate an object with Security Identifying Information (SID) for Windows Server environments.
- **Hyper-V™ supported** via CommVault virtualized server agents (1 agent to manage multiple VMs).
- **Continuous Data Replication** offered within the Simpana suite.
- **HTTP Server addressing** with opportunistic scheduling.
- **The SnapProtect™** feature enables multiple point-in-time snapshots with the ability to recover a server and the application quickly.
- **Worldwide management** via a browser-based interface.
- **Multi-Lingual support**, including Outlook plug-in for active archiving so users can remain in their native language.
- **Simple off-site data management** with the ability to mix and match media types (Disk, Cloud, SAN, NAS, Tape, Magneto-Optical, DVD, etc.).
- **Reporting is simple** and can include custom reports that can be sent to mobile devices as well as Microsoft® System Center.
- **Cross Server Restore capability** enables the movement of small and large data from one Exchange environment to another.
- **PST Files** can be reduced or eliminated with CommVault software while **PST data** can be added for content and archive tracking.
- **Accelerate your upgrade** to Exchange Server 2010 knowing data can be retrieved from Exchange 5.5, 2000 and Exchange Server 2003/2007 at the message, mailbox or Outlook extended information level.
- **CommVault software's 64-bit optimization** ensures high performance and full advantage of the 64-bit server technology and 64-bit Windows Server software.
- **Quota Management:** Users can more easily remain within their mailbox quota limits by using CommVault software's mailbox management, and leverage less expensive secondary storage (Windows Storage Server for example) for older, less utilized E-Mail.
- **VSS integration for Exchange, SharePoint and SQL with "Generic Requestor" capability** enabling a single operation for hardware/provider based snapshots regardless of vendor.
- **CommVault Professional Services:** Broad worldwide coverage and support available for rapid installation that can be tailored to your environment.

About CommVault

The CommVault® Simpana Windows Centric Data Management solution enables you to use 1 SINGLE Data Management solution which will optimally perform the tasks of many other disparate solutions while leveraging storage devices such as disk and Azure. Simpana software is the result of extensive collaboration between Microsoft and CommVault.

Use Windows to easily manage SharePoint, Exchange, Lync, SQL, Active Directory, Windows and heterogeneous environments such as UNIX, Linux, NDMP, NetWare, GroupWise, Oracle, Sybase, DB2, Notes/Domino, Informix and MAC data.

CommVault is a Gold Certified partner that was recognized as a:

- 2006 Microsoft Innovation Technology Partner of the Year Finalist
- 2009 Advanced Infrastructure – Storage Solutions Partner of the Year Finalist
- 2010 Global ISV Infrastructure Partner of the Year Finalist



© 2010 Microsoft Corporation. All rights reserved.

This document is for information purposes only. MICROSOFT MAKES NO WARRANTIES, EXPRESS OR IMPLIED, IN THIS SUMMARY. Microsoft, the Microsoft logo, Active Directory, Azure, Hyper-V, Internet Explorer, Lync, Outlook, SharePoint, SQL Server, Windows, Windows Server, and Windows Server System are either registered trademarks or trademarks of Microsoft Corporation in the United States and/or other countries. All other trademarks are property of their respective owners.

CommVault, CommVault and logo, the "CV" logo, CommVault Systems, Solving Forward, Singular Information Management, Simpana, Unified Data Management, Vault Tracker, and SnapProtect are trademarks or registered trademarks of CommVault Systems, Inc.