



# CommVault® Simpana® 9

## for DeDuplication/Single Instance Storage

*"We're expanding the role of Windows Servers by enabling them to be "THE" DeDuplication target for an enterprise."*

**Randy De Meno**  
Chief Technologist  
Windows Products

### Top Reasons Why Customers Choose Microsoft and CommVault software for DeDuplication

1. Single, Unified, Windows Centric solution reduces heterogeneous storage requirements while saving network usage.
2. "Release Independence" enables seamless search across various file system versions and applications.
3. 64-bit optimization enables superior performance of data movement, in particular for large SharePoint, Exchange, Microsoft SQL Server and Microsoft Lync environments.
4. Integrated with SharePoint Records Manager. Policies can be set to send various data types based on content or classification into Records Manager.
5. Manage all of your data from any location, anywhere in the world with Internet connectivity.

## Windows Server® as a DeDuplication/SIS for the Heterogeneous Enterprise Reducing Storage Use and Cost

### Solution Overview

**CommVault's Singular Information Management® solution** showcases the Windows® platform **enabling Windows servers to be the DeDuplication/Single Instance storage device** for your heterogeneous enterprise. Any hardware running **Windows Server, Hyper-V™ or Azure™ Cloud** storage can now dramatically **reduce the amount of data stored** for backup, archive with SnapProtect™ technology enabling reduced storage utilization and cost. Windows Servers with disk, tape or Cloud storage (Azure) can be leveraged **while reducing data movement over the network**. The DeDuplication can be performed prior to sending data over the network or on the media device selected without re-hydration required for restore.

- **Single pass backup** with restore options from full machine, volume or file
- Full application (Microsoft® **Exchange, Microsoft® SharePoint®, Microsoft® SQL Server™, Active Directory®**) data management within the Hyper-V framework
- **VSS** snapshot integrated
- **Automatic discovery** of VMs and ensure newly added machines are protected
- **DeDuplication** reduces storage requirements (DeDup PRIOR to secondary storage store)
- **Archive** by document size, age and version management **enabling faster, trimmer, better performing SharePoint and Exchange databases** while users can recall any and all versions of an item.
- Seamless **Azure** and tiered storage integration
- CommVault **SnapProtect™** integrated and VSS integrated
- **Synthetic Full** backup integration reduces number of full backups required and overall storage
- **"Resume-Ability"** enabling interrupted backups and restores to continue at point of interruption
- CommVault **SnapProtect™** technology integrated and VSS integrated
- **Simultaneous Search** across Hyper-V data, Exchange, SharePoint, Microsoft® Lync™ and Windows
- Auto-Feed data to **SharePoint Records Center** for Records Management
- Seamless support for **Cluster Shared Volumes (CSV)**
- Integrated with CommVault software's replication for high availability requirements
- Simple ability to clone VMs

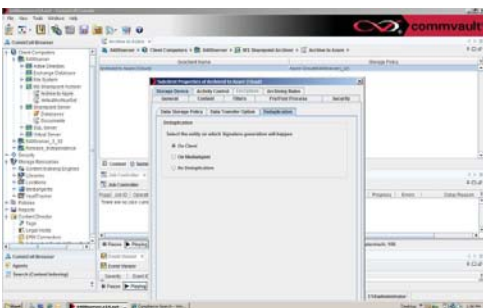
This enables a **Windows Server to be high performance DeDuplication target** in lieu of traditional expensive Linux-based hardware alternatives.

**CommVault software's rich application awareness outperforms traditional "DeDup" devices** by not only performing "block" level DeDup, but adding application awareness reducing even more storage use. Instead of simply managing "an Exchange database" or "a SharePoint database" and all the duplicate data contained within (especially at the attachment/file level), CommVault software's ability to recognize duplicates within the application provides a more intelligent hardware/software combination for DeDup/SIS.

CommVault software's **"Release Independence"** is seamlessly integrated with DeDup/SIS option enabling reduced instances of data being stored, even across various versions of applications and operating systems.

Being part of Simpana, CommVault's DeDup/SIS is also integrated with **CommVault software's FAST based E-Discovery** search capabilities. CommVault software can quickly search DeDup/SIS data, recalling the data while delivering the multiple locations the individual files/attachments resided. This means **DeDup is integrated with search and SharePoint Records Center** for long-term Records Management. Data can be seamlessly managed based on policies sent to Records Center for long term and legal discovery actions. The search results can be sent to various output types, including Microsoft® Office format. Automatically "Vault" data by storing it exactly as it originally was, including metadata.

With **historical data growing** across and expanding requirements on the retention of your heterogeneous data, your enterprise can leverage a powerful 64-bit Windows Server as a DeDup/SIS target. This includes reducing storage and archive requirements for Exchange, SharePoint, Windows, UNIX, Linux, NetWare, Notes/Domino and MAC data.



One Unified Solution for enterprise data management

# CommVault Simpana 9

## for DeDuplication/Single Instance Storage

### Contact Info



### CommVault

2 Crescent Place  
Oceanport, NJ 07757, USA  
www.commvault.com/microsoft  
E-Mail: microsoft@CommVault.com  
or info@commvault.com

### Primary business & technical contact:

Randy De Meno  
Chief Technologist – Windows Products and  
Microsoft Partnership  
Phone: +1 732-870-4038  
E-Mail: RDeMeno@CommVault.com

### Headquarters contact

Phone: +1 732-870-4000



### Microsoft Corporation

One Microsoft Way  
Redmond, WA 98052, USA

### US Field Partnering Manager

Teri Doyle  
Business Development Manager  
Phone: +1 425-421-7646  
E-Mail: TeriD@microsoft.com

### Primary Business Contact

Karl Dittman  
Business Development Manager  
Phone: +1 425-538-3468  
E-Mail: KarlD@microsoft.com

### CommVault Software's Windows Centric DeDuplication enhances:

- **Backup, Recovery, Migration, Archiving, Data Mining, Content-Search** with quick recovery of granular items including mailboxes, messages, folders, contacts, calendar items and more or an entire SharePoint environment with its Windows Server System™ environment.
- **DeDuplication/SIS** significantly reduces overall storage usage for backup and archive data including the ability to DeDup to Cloud (Azure) and tape.
- **Enterprise wide Content Search** with FAST for heterogeneous search and SharePoint Search integration.
- **Active Directory® & ADAM plug-in** enables management of objects and attributes, including the ability to recreate an object with Security Identifying Information (SID) for Windows Server environments.
- **Hyper-V™ supported** via CommVault virtualized server agents (1 agent to manage multiple VMs).
- **Continuous Data Replication** offered within the Simpana suite.
- **HTTP Server addressing** with opportunistic scheduling.
- **SnapProtect™ technology** enables multiple point-in-time snapshots with the ability to recover a server and the application quickly.
- **Web Desktop Console** for remote off-line browse.
- **Worldwide management** via a browser-based interface.
- **Multi-Lingual support**, including Microsoft® Outlook® plug-in for active archiving so users can remain in their native language.
- **Reporting is simple** and can include custom reports that can be sent to mobile devices as well as Microsoft® System Center.
- **Cross Server Restore capability** enables the movement of small and large data from one SharePoint environment to another.
- **Accelerate your upgrade** SharePoint 2010 knowing data can be retrieved from previous versions of SharePoint (back to SharePoint 2003).
- **CommVault software's 64-bit optimization** ensures high performance and full advantage of the 64-bit server technology and 64-bit Windows Server software.
- **Quota Management:** Users can more easily remain within their mailbox quota limits by using CommVault software's mailbox management, and leverage less expensive secondary storage (Windows Storage Server for example) for older, less utilized E-Mail.
- **Simple Off-Site data management** with the ability to mix and match media types (Disk, SAN, NAS, Tape, Magneto-Optical, DVD, etc.). Simplifies setup of D2D2T, D2D2C.
- **VSS integration for Exchange, SharePoint and SQL with "Generic Requestor" capability** enabling a single operation for hardware/provider based snapshots regardless of vendor.
- **Synthetic Full Backup offers the ability** to significantly reduce the number of full backups and media used for storage.
- **Web Part Integration**, for seamless recalls of documents from secondary and tertiary storage.
- **CommVault Professional Services:** Broad worldwide coverage and support available for rapid installation that can be tailored to your environment.

### About CommVault

The CommVault® Simpana Windows Centric Data Management solution enables you to use 1 SINGLE Data Management solution which will optimally perform the tasks of many other disparate solutions while leveraging storage devices such as disk and Azure. Simpana software is the result of extensive collaboration between Microsoft and CommVault.

Use Windows to easily manage SharePoint, Exchange, Lync, SQL, Active Directory, Windows and heterogeneous environments such as UNIX, Linux, NDMP, NetWare, GroupWise, Oracle, Sybase, DB2, Notes/Domino, Informix and MAC data.

CommVault is a Gold Certified partner that was recognized as a:

- 2006 Microsoft Innovation Technology Partner of the Year Finalist
- 2009 Advanced Infrastructure – Storage Solutions Partner of the Year Finalist
- 2010 Global ISV Infrastructure Partner of the Year Finalist



© 2010 Microsoft Corporation. All rights reserved.

This document is for information purposes only. MICROSOFT MAKES NO WARRANTIES, EXPRESS OR IMPLIED, IN THIS SUMMARY. Microsoft, the Microsoft logo, Active Directory, Azure, Hyper-V, Internet Explorer, Lync, Outlook, SharePoint, SQL Server, Windows, Windows Server, and Windows Server System are either registered trademarks or trademarks of Microsoft Corporation in the United States and/or other countries. All other trademarks are property of their respective owners.

CommVault, CommVault and logo, the "CV" logo, CommVault Systems, Solving Forward, Singular Information Management, Simpana, Unified Data Management, Vault Tracker, and SnapProtect are trademarks or registered trademarks of CommVault Systems, Inc.