



CommVault® Simpana® 9 for Azure

"CommVault's seamless integration of Azure, with HTTP integration enables Azure storage as primary, secondary or tertiary heterogeneous storage location."

Randy De Meno
Chief Technologist
Windows Products

Top Reasons Why Customers Choose Microsoft and CommVault Software for Microsoft® SharePoint® Products and Technologies

1. Delivers a single Windows Centric solution enabling active archiving, content search, classification, migration, backup, recovery, content management, Deduplication and compliance for Hyper-V and Microsoft applications such as SharePoint, Exchange, LYNC and Office Server.
2. "Release Independence" enables seamless search across various file system versions and applications.
3. 64-bit optimization enables superior performance of data movement, in particular for large SharePoint, Microsoft® Exchange, Microsoft® SQL Server™ and Microsoft® Lync™ environments.
4. Integrated with SharePoint Records Manager. Policies can be set to send various data types based on content or classification into Records Manager.
5. Manage all of your data from any location, anywhere in the world with Internet connectivity.

Windows® Centric Singular Information Management® Approach for Azure™ Cloud

Solution Overview

CommVault's Singular Information Management® solution showcases the Windows platform **enabling Windows Azure™ to be a** storage device for your heterogeneous enterprise. Windows Azure can now be a strategic part of an enterprise's storage environment. With CommVault® Simpana® software's DeDuplication capability, CommVault software can dramatically reduce the amount of data sent to Azure for backup, archive and search enabling a reduction of storage utilization and cost. The DeDuplication can be performed prior to sending data over the network or on the media device selected without re-hydration required for restore.

This enables a **Windows server to be a high performance, integrated Azure and DeDuplication target.** CommVault ensures that Windows Azure is integrated with a business's "on-premise" data such that data can be accessed and managed regardless of location.

CommVault software's rich application awareness outperforms traditional "DeDup" devices by not only performing "block" level DeDup, but adding application awareness to reduce even more storage use. Instead of simply managing "an Exchange database" or "a SharePoint database" and all the duplicate data contained within (especially at the attachment/file level), CommVault's ability to recognize duplicates within the application provides a more intelligent hardware/software combination for DeDup/SIS.

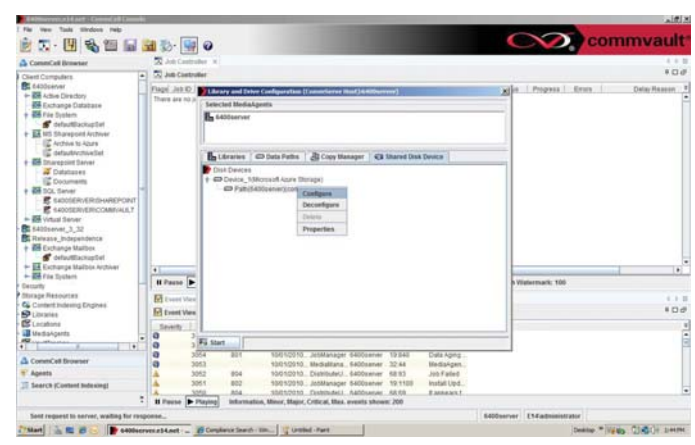
CommVault **software's "Release Independence"** is seamlessly integrated with DeDup/SIS option enabling reduced instances of data being stored, even across various versions of applications and operating systems.

CommVault **software's embedded encryption** ensures the data movement is secure while using native REST and HTTP interfaces. The built-in reporting enables better tracking of Cloud-based data movement.

CommVault software's archiving enables Azure to be a central storage location for archived and backed up data for Exchange, SharePoint, Active Directory®, SQL, Windows, Notes/Domino and other heterogeneous file system data.

Being part of Simpana 9, the CommVault DeDup / SIS feature is also integrated with **CommVault's FAST based E-Discovery** search capabilities. CommVault software can quickly search DeDup/SIS data, recalling the data while delivering the multiple locations the individual files/attachments resided. This means **DeDup is integrated with search and SharePoint® Records Center** for long-term Records Management. Data can be seamlessly managed based on policies sent to Records Center for long term and legal discovery actions. The search results can be sent to various output types, including Microsoft Office format. Automatically "Vault" data by storing it exactly as it originally was, including metadata.

With **historical data growing** across and expanding requirements on the retention of your heterogeneous data, your enterprise can leverage a powerful 64-bit Windows Server as a DeDup/SIS target. This includes reducing storage and archive requirements for Exchange, SharePoint, Windows, UNIX, Linux, NetWare, Notes/ Domino and MAC data.



One Unified Solution for enterprise data management

CommVault Simpana 9

for Azure

Contact Info



CommVault

2 Crescent Place
Oceanport, NJ 07757, USA
www.commvault.com/microsoft
E-Mail: microsoft@CommVault.com
or info@commvault.com

Primary business & technical contact:

Randy De Meno
Chief Technologist – Windows Products and
Microsoft Partnership
Phone: +1 732-870-4038
E-Mail: RDeMeno@CommVault.com

Headquarters contact

Phone: +1 732-870-4000



Microsoft Corporation

One Microsoft Way
Redmond, WA 98052, USA

US Field Partnering Manager

Teri Doyle
Business Development Manager
Phone: +1 425-421-7646
E-Mail: TeriD@microsoft.com

Primary Business Contact

Karl Dittman
Business Development Manager
Phone: +1 425-538-3468
E-Mail: KarlD@microsoft.com

CommVault's Embrace & Enhance of Azure enables:

- **Backup, Recovery, Migration, Archiving, Data Mining, Content-Search** with quick recovery of granular items including mailboxes, messages, folders, contacts, calendar items and more or an entire SharePoint environment with its Windows Server System™ environment.
- **DeDuplication/SIS** significantly reduces overall storage usage for backup and archive data including the ability to DeDup to Cloud (Azure) and tape.
- **Enterprise wide Content Search** with FAST for heterogeneous search and SharePoint Search integration.
- **Active Directory® & ADAM plug-in** enables management of objects and attributes, including the ability to recreate an object with Security Identifying Information (SID) for Windows Server environments.
- **Hyper-V™ supported** via CommVault virtualized server agents (1 agent to manage multiple VMs).
- **Continuous Data Replication** offered within the Simpana suite.
- **HTTP Server addressing** with opportunistic scheduling.
- **SnapProtect™ technology** enables multiple point-in-time snapshots with the ability to recover a server and the application quickly.
- **Web Desktop Console** for remote off-line browse.
- **Worldwide management** via a browser-based interface.
- **Multi-Lingual support**, including Microsoft® Outlook® plug-in for active archiving so users can remain in their native language.
- **Reporting is simple** and can include custom reports that can be sent to mobile devices as well as Microsoft® System Center.
- **Cross Server Restore capability** enables the movement of small and large data from one SharePoint environment to another.
- **Accelerate your upgrade** SharePoint 2010 knowing data can be retrieved from previous versions of SharePoint (back to SharePoint 2003).
- **CommVault software's 64-bit optimization** ensures high performance and full advantage of the 64-bit server technology and 64-bit Windows Server software.
- **Quota Management:** Users can more easily remain within their mailbox quota limits by using CommVault software's mailbox management, and leverage less expensive secondary storage (Windows Storage Server for example) for older, less utilized E-Mail.
- **Simple Off-Site data management** with the ability to mix and match media types (Disk, SAN, NAS, Tape, Magneto-Optical, DVD, etc.). Simplifies setup of D2D2T, D2D2C.
- **VSS integration for Exchange, SharePoint and SQL with "Generic Requestor" capability** enabling a single operation for hardware/provider based snapshots regardless of vendor.
- **Synthetic Full Backup offers the ability** to significantly reduce the number of full backups and media used for storage.
- **Web Part Integration**, for seamless recalls of documents from secondary and tertiary storage.
- **CommVault Professional Services:** Broad worldwide coverage and support available for rapid installation that can be tailored to your environment.

About CommVault

The CommVault® Simpana Windows Centric Data Management solution enables you to use 1 SINGLE Data Management solution which will optimally perform the tasks of many other disparate solutions while leveraging storage devices such as disk and Azure. Simpana software is the result of extensive collaboration between Microsoft and CommVault.

Use Windows to easily manage SharePoint, Exchange, Lync, SQL, Active Directory, Windows and heterogeneous environments such as UNIX, Linux, NDMP, NetWare, GroupWise, Oracle, Sybase, DB2, Notes/Domino, Informix and MAC data.

CommVault is a Gold Certified partner that was recognized as a:

- 2006 Microsoft Innovation Technology Partner of the Year Finalist
- 2009 Advanced Infrastructure – Storage Solutions Partner of the Year Finalist
- 2010 Global ISV Infrastructure Partner of the Year Finalist



2006 TECHNOLOGY INNOVATION
PARTNER OF THE YEAR
ISV/Software Solutions
Finalist



2009 ADVANCED INFRASTRUCTURE SOLUTIONS
Storage Solutions
PARTNER OF THE YEAR
FINALIST



2010 PARTNER OF THE YEAR
Microsoft Global ISV
Infrastructure
Finalist

© 2010 Microsoft Corporation. All rights reserved.

This document is for information purposes only. MICROSOFT MAKES NO WARRANTIES, EXPRESS OR IMPLIED, IN THIS SUMMARY. Microsoft, the Microsoft logo, Active Directory, Azure, Hyper-V, Internet Explorer, Lync, Outlook, SharePoint, SQL Server, Windows, Windows Server, and Windows Server System are either registered trademarks or trademarks of Microsoft Corporation in the United States and/or other countries. All other trademarks are property of their respective owners.

CommVault, CommVault and logo, the "CV" logo, CommVault Systems, Solving Forward, Singular Information Management, Simpana, Unified Data Management, Vault Tracker, and SnapProtect are trademarks or registered trademarks of CommVault Systems, Inc.